

C&K LCA Series Subminiature Snap-acting Switches



Features/Benefits

- Compact design
- Long life and high electrical capacity
- Quick connect, or solder terminals
- Wide variety of actuator styles
- RoHS compatible

Typical Applications

- Motorized equipment
- Sump pump
- Thermostatic controls



Specifications

CONTACT RATING: 10 AMPS @ 125 V AC/ 5 AMPS @ 250 V AC.
 ELECTRICAL LIFE: 50,000 cycles at 10 AMPS @ 125 V AC /
 5 AMPS @250 VAC.
 INSULATION RESISTANCE: 100 M ohm min.
 DIELECTRIC STRENGTH: 1,500 Vrms min. @ sea level.
 OPERATING TEMPERATURE: -10°C to 125°C
 OPERATING FORCE: 140 grams at actuator button MAX.
 Forces are less at free end of lever actuators; (see ACTUATOR'S
 option sections).
 MOUNTING: 2-56 screws, torque 2.3 in/lbs max.

NOTE: For the latest information regarding RoHS compliance, please go
 to: www.ittcannon.com/rohs.

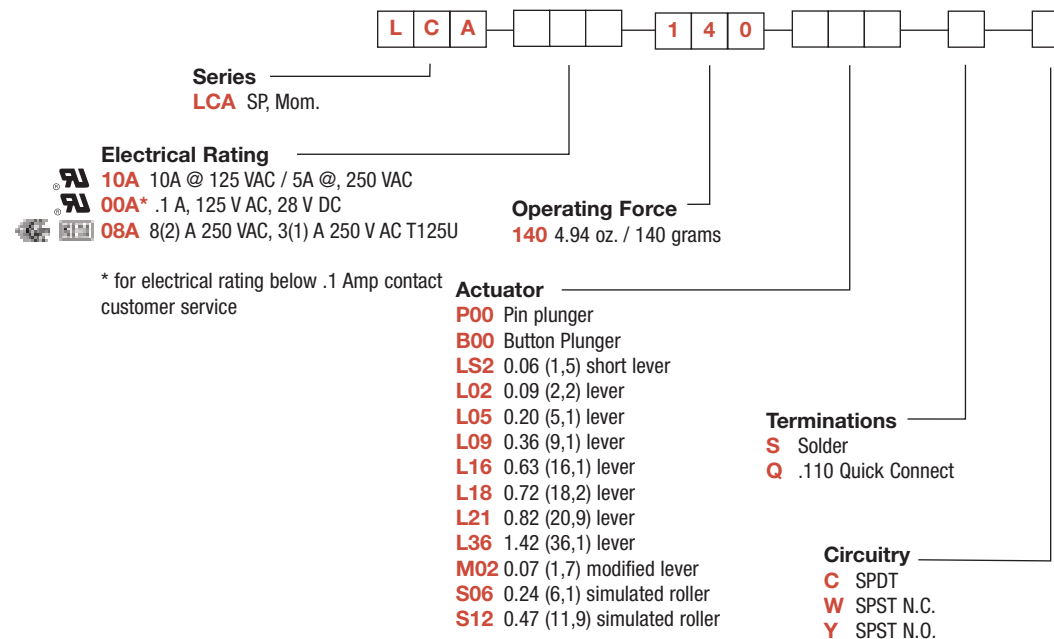
NOTE: Specifications and materials listed above are for switches with standard options.
 For information on specific and custom switches, consult Customer Service center.

Materials

SWITCH HOUSING: Thermoplastic polyester or high temperature
 thermoplastic (PTS) (UL 94V-0).
 ACTUATOR BUTTON: Thermoplastic polyester (Ag-Ni).
 SPRING: Copper alloy.
 PIVOT: Copper alloy.
 MOVABLE CONTACTS: Silver nickel 8 and 10 amp with gold plate
 for .1 AMP.
 STATIONARY CONTACTS: Silver nickel welded on copper alloy.
 TERMINALS: Copper alloy.

Build-A-Switch

To order, simply select desired option from each category and place in the appropriate box. Available options are shown and
 described on pages K-22 thru K-24. For additional options not shown in catalog, consult Customer Service Center.



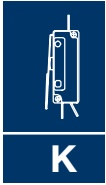
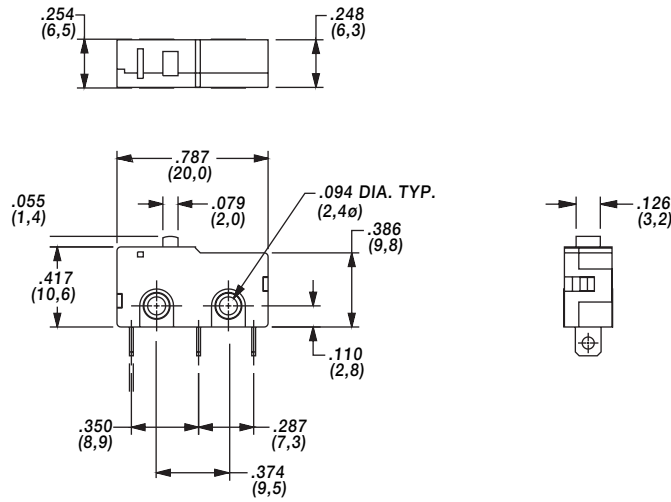
Dimensions are shown: Inch (mm)
 Specifications and dimensions subject to change



C&K LCA Series Subminiature Snap-acting Switches

SERIES

LCA



Snap-acting

ELECTRICAL RATING

RoHS COMPLIANT *	RoHS COMPATIBLE *	OPTION CODE	ELECTRICAL RATING	
YES	YES	10A	10A @ 125 VAC / 5A @ 250 VAC	
YES	YES	08A	3(1) A 250 V AC 8(2) A 250 V AC T125U	
YES	YES	00A**	.1A, 125, VAC, 28 V DC	

* Note: See Technical Data section of this catalog for RoHS compliant and compatible definition and specifications.
 ** For electrical rating below .1 Amp, contact customer service.

OPERATING FORCE

OPTION CODE	OPERATING FORCES (oz/grams)
140	4.94 / 140 grams max.



Dimensions are shown: Inch (mm)
 Specifications and dimensions subject to change

C&K LCA Series Subminiature Snap-acting Switches

ACTUATOR

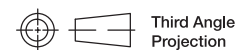
P00	SEE PAGE K-22 FOR DIMENSIONS				
B00		M02		L36	
L05		L09		L18	
L16		L02		S12	
LS2		L21			
S06					



K

Snap-acting

ACTUATOR CODE	Max Operate Force	
	Grams	oz
P00	140	4.94
B00	140	4.94
LS2	59	2.08
L02	42	1.48
L05	35	1.23
L09	28	0.99
L16	21	0.74
L18	20	0.71
L21	18	0.63
L36	13	0.46
M02	43	1.52
S06	32	1.13
S12	25	0.88



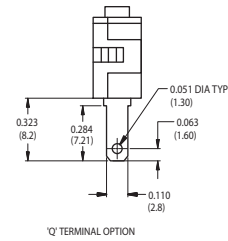
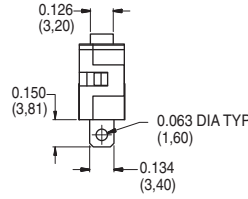
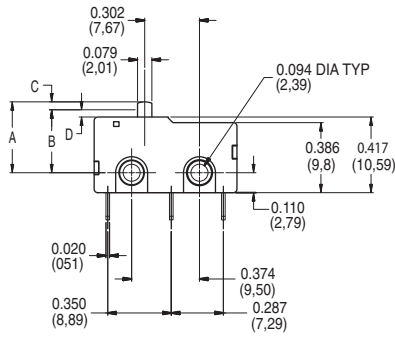
Third Angle
Projection
Dimensions are shown: Inch (mm)
Specifications and dimensions subject to change

C&K LCA Series Subminiature Snap-acting Switches

TERMINATIONS

S SOLDER

Q QUICK CONNECT



P00

A	Free position (max):	0.382 in	9,7 mm
B	Operating position:	0.343 in +/- 0.020 in	8,7 mm +/- 0,5 mm
C	Pre-travel (max):	0.031 in	0,8 mm
D	Over-travel (max):	0.020 in	0,5 mm

B00

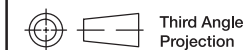
A	Free position (max):	0.433 in	11,0 mm
B	Operating position:	0.394 in +/- 0.020 in	10,0 mm +/- 0,5 mm
C	Pre-travel (max):	0.031 in	0,8 mm
D	Over-travel (max):	0.004 in	0,1 mm

CIRCUITRY

C SPDT (Single Pole, Double Throw)

W SPST N.C. (Single Pole, Single Throw, Normally Closed)

Y SPST N.O. (Single Pole, Single Throw, Normally Open)



Third Angle
Projection
Dimensions are shown: Inch (mm)
Specifications and dimensions subject to change

